

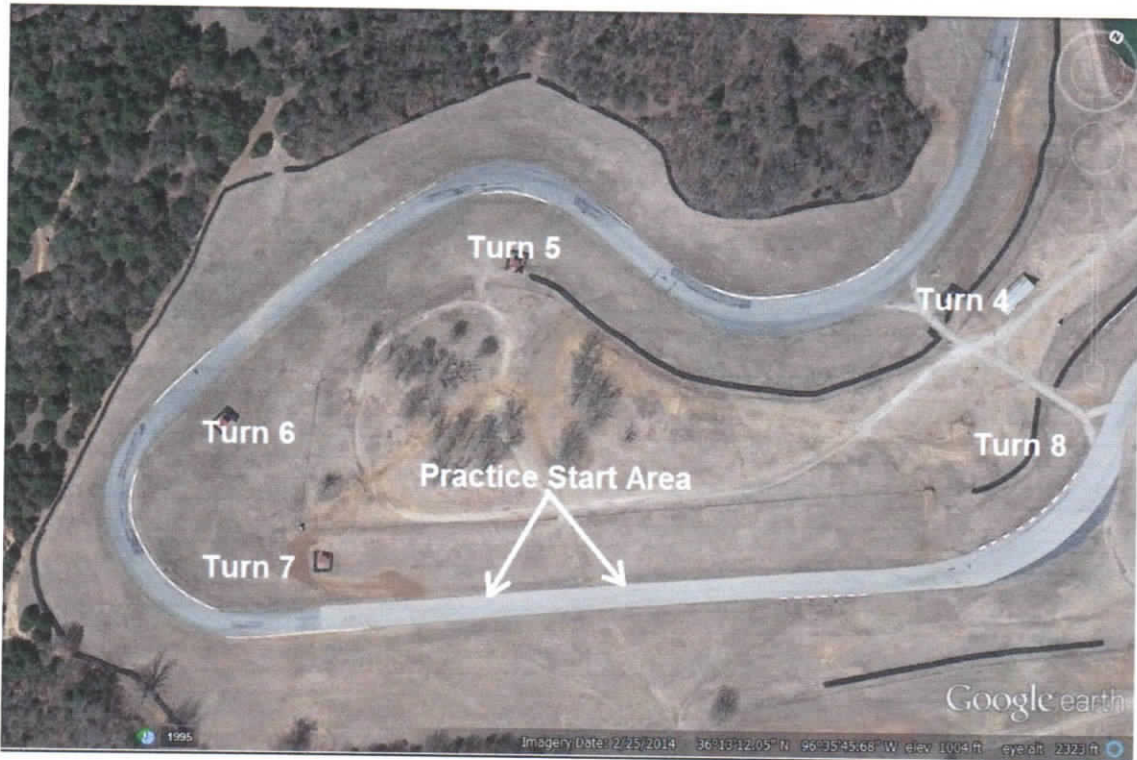


Race Direction Bulletin

Bulletin 001 1844, May 12, 2017

Practice Start Area Location

THE PRACTICE START AREA WILL BE LOCATED ON RIDERS LEFT BETWEEN TURNS 7 AND TURN 8. THE PRACTICE START AREA WILL BE CLEARLY MARKED WITH A SIGN AND CONES. PRACTICE STARTS MAY ONLY BE PERFORMED AFTER THE CHECKERED FLAG HAS BEEN DISPLAYED IN EACH PRACTICE SESSION. NO PRACTICE STARTS WILL BE ALLOWED AFTER PRACTICE HAS ENDED.



The Race Direction

Walter Walker

(Race Director)

Ryan Rukowski

(Assistant Race Director/Safety Officer)

Danny Dominguez

(Riders' Representative)

(One signiture required to be valid)